



Fairfield-Suisun Unified School District

2490 Hilborn Road • Fairfield, California 94534 • Telephone (707) 399-5148

FAX: (707) 399-5162 • www.fsusd.org

"Fairfield-Suisun Unified School District is a premier learning community that empowers each student to thrive in an ever-changing world."

ADDENDUM NO. 01:

Dated: February 19, 2020

PROJECT: PLAYGROUND INSTALLATION AT VARIOUS SITES
BID #20F-128

This Addendum forms a part of the Contract Documents and modifies the original Bidding Documents and previous Addenda as noted below. Acknowledge receipt of this Addendum in the space provided in the Proposal Form. Failure to do so may subject Bidder to disqualification.

A. CLARIFICATIONS

ITEM 1: Dimensions shown on the manufacturer's drawings in the Project Manual with respect to the playground surface areas are superseded by the dimensions given in the plan set.

B. CHANGES TO SPECIFICATIONS

ITEM 1: Section 32 18 16, 2.1 D.9

Strike "with Black". The District will mix two standard colors 50/50.

C. CHANGES TO DRAWINGS

ITEM 1 : Replace the Fairview ES Sheet in its entirety with the sheet provided in this Addendum.

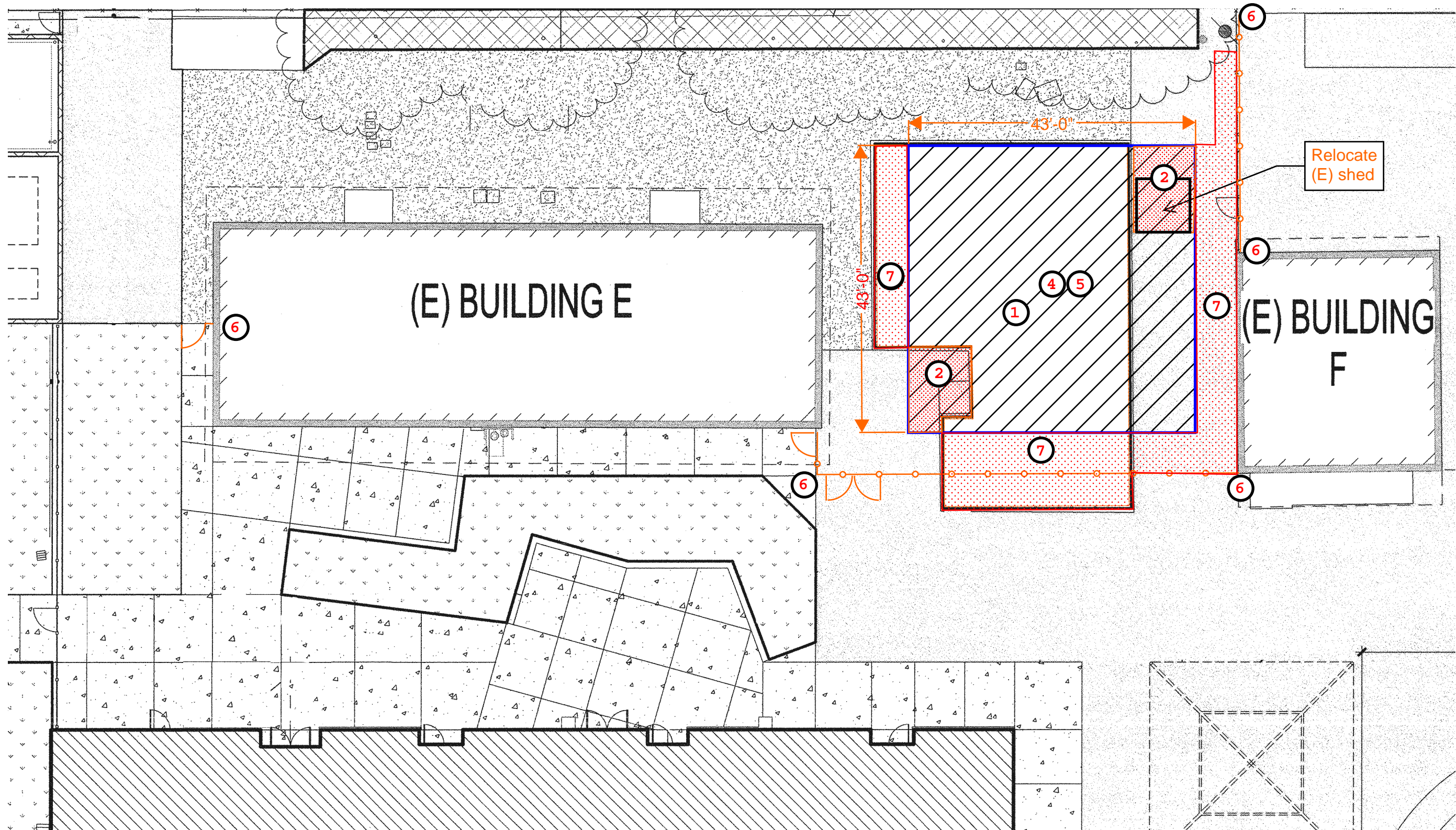
D. NEW DRAWINGS

ITEM 1: N/A

E. RESPONSE TO BIDDER QUESTIONS

N/A

Attachments: Drawing Sheet "Fairview ES Addendum 1"



Demo Notes:

1. Demo play box and equipment completely to 12" below adjacent asphalt, +/- 1,800 Sq ft.
2. Demo asphalt, grade existing AB to receive new work. +/- 250 sq ft.
3. This site only has student occupancy in adjacent areas during construction, provide temporary fencing to isolate students from the ongoing work.

New Work Notes:

4. Prepare area for new 43'x43' play surfacing and equipment. Place new base rock, cushion layer and wear layer, see details.
5. Install OFCI equipment per Manufacturer's plans and recommendations.
6. New 6' CL fence with three 4' gates and one 8' two-leaf gate, +/- 112 lf. 1-3/4" mesh, zinc-coated, 0.148", with top-rail, bottom tension wire, double knuckle selvage. See details.
7. Patch asphalt, approximately 880 sq ft.