

Fairfield-Suisun Unified School District

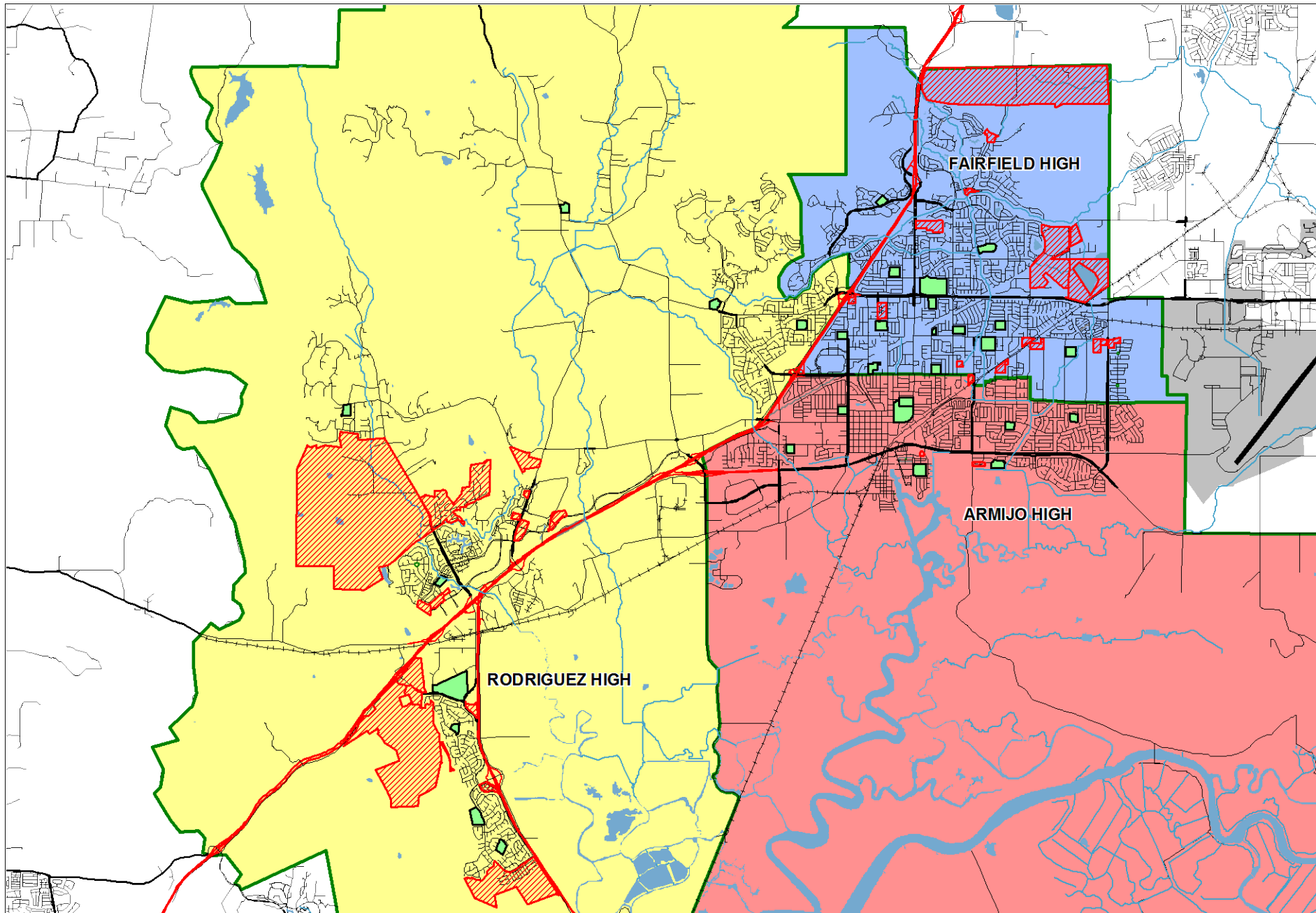
Facility Master Plan 10 Year Projections

Presented by SchoolWorks, Inc. at the following meetings:

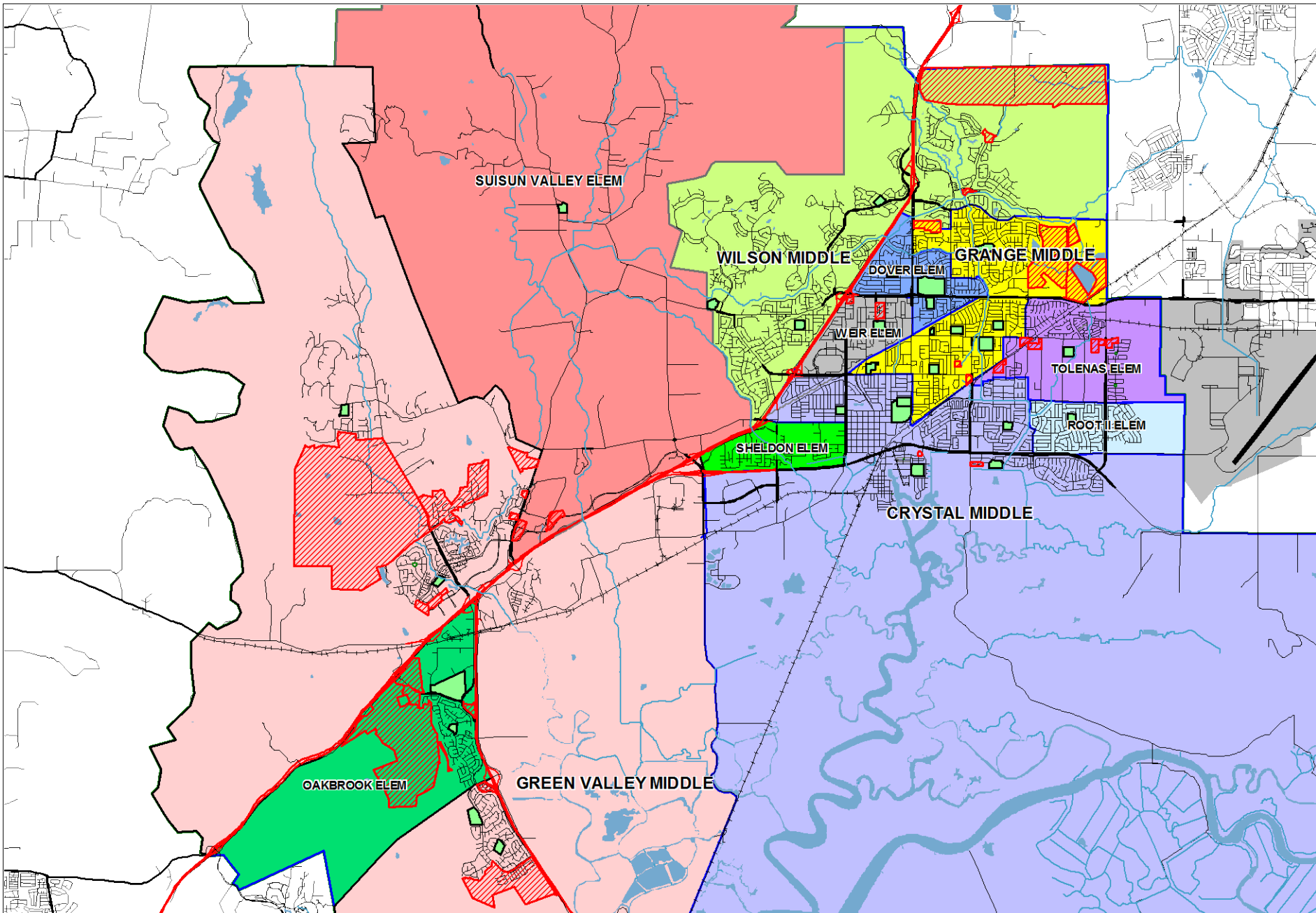
Steering Committee – October 13, 2015

Facilities Master Plan Committee – November 17, 2015

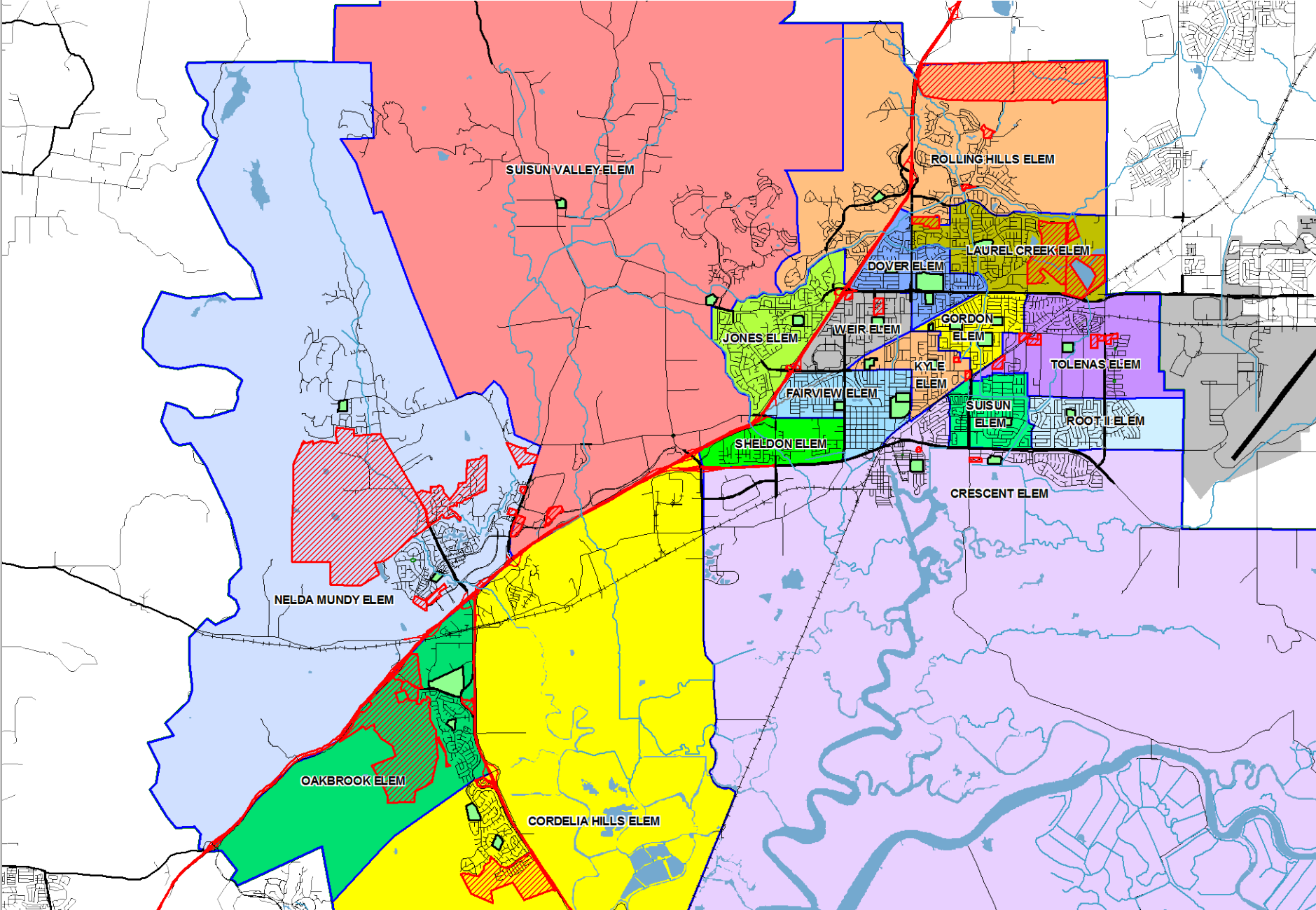
High School Boundaries



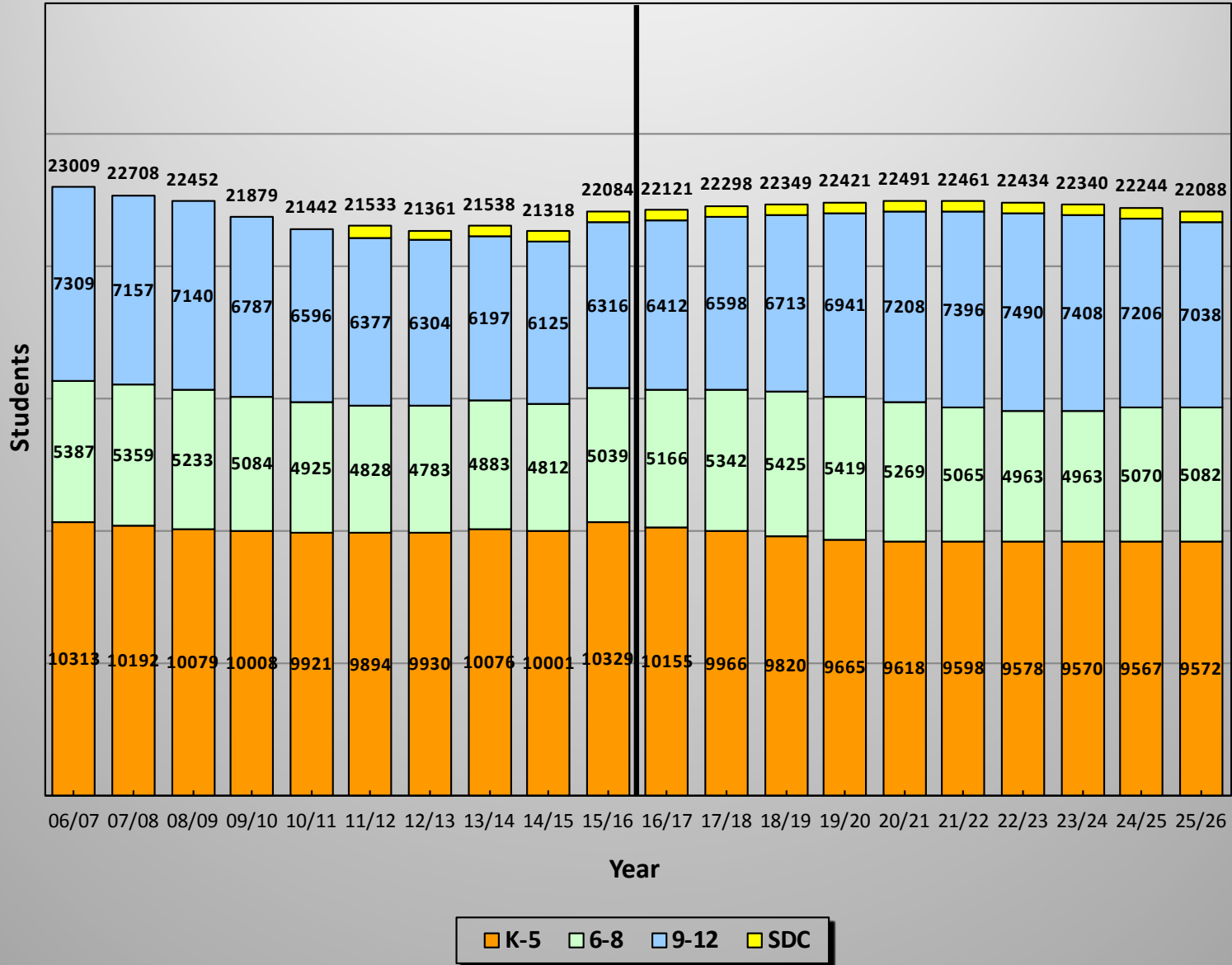
Middle School Boundaries



Elementary School Boundaries



10 Year Enrollment History & 10 Year Enrollment Projection



Fairfield-Suisun Unified School District

Enrollment Projection Summary by School

School	Current Enrollment							10 Years
	15/16	16/17	17/18	18/19	19/20	20/21	21/22	25/26
Cordelia Hills Elem	601	627	610	583	571	559	549	484
Crescent Elem	660	643	628	616	599	593	588	543
Dover Elem	0	833	847	846	814	763	715	679
Fairview Elem	621	576	564	548	523	509	520	501
Gordon Elem	712	575	557	545	537	515	525	483
Jones Elem	758	692	684	673	649	644	634	610
Kyle Elem	778	786	756	734	719	722	702	681
Laurel Creek Elem	981	672	654	644	633	653	681	769
Mundy Elem	762	728	718	709	701	669	691	728
Oakbrook Elem	652	607	600	617	647	705	709	697
Rolling Hills Elem	661	634	635	627	613	626	638	701
Root II Elem	642	838	842	829	816	816	823	832
Sheldon Elem	684	693	675	658	642	629	629	617
Suisun Elem	607	576	563	552	540	541	528	502
Suisun Valley Elem	522	530	545	545	546	546	546	538
Tolenas Elem	621	688	684	690	693	676	662	704
Weir Elem	857	839	845	847	829	814	814	805
Dual Immersion	361	361	360	355	354	349	347	352
Elementary Totals	11,480	11,898	11,767	11,618	11,426	11,329	11,301	11,226
Crystal Middle	999	872	895	888	893	867	799	794
Grange Middle	1,151	844	870	914	965	921	846	921
Green Valley Middle	991	969	1,025	1,044	999	977	931	950
Wilson Middle	457	450	461	486	508	492	489	472
Middle Totals	3,598	3,135	3,251	3,332	3,365	3,257	3,065	3,137
Armijo High	2,436	2,439	2,479	2,546	2,635	2,692	2,713	2,527
Fairfield High	1,484	1,508	1,555	1,575	1,585	1,712	1,741	1,708
Rodriguez High	1,835	1,753	1,817	1,842	1,958	2,028	2,151	2,016
High Totals	5,755	5,700	5,851	5,963	6,178	6,432	6,605	6,251
Sem Yeto High	209	210	218	216	220	229	237	242
Sem Yeto Satellite Armijo	199	200	207	206	209	217	226	230
Independent Study	45	46	47	46	47	49	51	48
Matt Garcia Academy	133	137	141	144	144	146	144	141
SIGMA	34	34	35	34	35	36	37	38
Community Day	1	1	1	1	1	1	1	1
Public Safety Academy	630	760	780	789	796	795	794	774
Other Totals	1,251	1,388	1,429	1,436	1,452	1,473	1,490	1,474
District Totals	22,084	22,121	22,298	22,349	22,421	22,491	22,461	22,088
Annual Change		37	177	51	72	70	-30	-373

10 Year Projections

<u>School</u>	<u>T</u>	<u>K</u>	<u>1</u>	<u>2</u>	<u>3</u>	<u>4</u>	<u>5</u>	<u>6</u>	<u>7</u>	<u>8</u>	<u>9</u>	<u>10</u>	<u>11</u>	<u>12</u>	<u>SDC</u>	<u>TOTAL</u>	<u>Net CR</u>	<u>Capacity</u>	<u>Utilization</u>
Cordelia Hills Elem	27	48	77	71	77	88	96	0	0	0	0	0	0	0	0	484	29	796	60.8%
Crescent Elem	24	76	82	81	98	92	70	0	0	0	0	0	0	0	20	543	26	660	82.3%
Dover Elem	29	88	79	85	67	60	77	63	66	65	0	0	0	0	0	679	31	904	75.1%
Fairview Elem	30	87	75	70	78	80	80	0	0	0	0	0	0	0	1	501	29	776	64.6%
Gordon Elem	26	73	68	78	76	80	82	0	0	0	0	0	0	0	0	483	25	670	72.1%
Jones Elem	21	51	68	90	116	129	117	0	0	0	0	0	0	0	18	610	29	762	80.1%
Kyle Elem	40	112	103	110	101	106	109	0	0	0	0	0	0	0	0	681	31	824	82.6%
Laurel Creek Elem	23	105	121	114	123	131	130	0	0	0	0	0	0	0	22	769	34	882	87.2%
Mundy Elem	30	107	112	106	123	118	109	0	0	0	0	0	0	0	23	728	29	742	98.1%
Oakbrook Elem	12	66	66	68	71	79	75	111	80	63	0	0	0	0	6	697	26	742	93.9%
Rolling Hills Elem	29	110	128	109	108	110	107	0	0	0	0	0	0	0	0	701	22	578	121.3%
Root II Elem	29	82	106	110	102	99	84	66	76	61	0	0	0	0	17	832	33	910	91.4%
Sheldon Elem	22	59	69	72	69	62	62	72	73	57	0	0	0	0	0	617	24	696	88.6%
Suisun Elem	32	78	80	73	78	89	72	0	0	0	0	0	0	0	0	502	29	776	64.7%
Suisun Valley Elem	14	48	48	48	48	68	68	67	66	63	0	0	0	0	0	538	22	638	84.3%
Tolenas Elem	26	76	71	79	84	64	79	71	76	61	0	0	0	0	17	704	30	838	84.0%
Weir Elem	30	79	87	79	77	84	80	79	79	102	0	0	0	0	29	805	28	768	104.8%
Dual Immersion	12	39	44	47	45	44	36	40	19	26	0	0	0	0	0	352	19	536	65.7%
Crystal Middle	0	0	0	0	0	0	0	249	272	259	0	0	0	0	14	794	30	998	79.6%
Grange Middle	0	0	0	0	0	0	0	299	285	321	0	0	0	0	16	921	34	1,134	81.2%
Green Valley Middle	0	0	0	0	0	0	0	261	322	359	0	0	0	0	8	950	29	964	98.5%
Wilson Middle	0	0	0	0	0	0	0	182	142	139	0	0	0	0	9	472	30	998	47.3%
Armijo High	0	0	0	0	0	0	0	0	0	0	612	606	620	622	67	2,527	102	2,776	91.0%
Fairfield High	0	0	0	0	0	0	0	0	0	0	422	429	387	431	39	1,708	101	2,764	61.8%
Rodriguez High	0	0	0	0	0	0	0	0	0	0	535	535	510	392	44	2,016	83	2,276	88.6%
Sem Yeto High	0	0	0	0	0	0	0	0	0	0	1	75	157	9	242	22	537	45.1%	
Sem Yeto Satellite Armijo	0	0	0	0	0	0	0	0	0	0	2	60	168	0	230	0	0		
Independent Study	0	0	0	0	0	0	1	3	2	8	3	5	11	15	0	48	0	0	
Matt Garcia Academy	0	0	0	0	0	0	0	25	25	23	22	16	17	13	0	141	8	236	59.7%
SIGMA	0	0	0	0	0	0	0	0	0	0	0	0	1	1	36	38	0	0	
Community Day	0	0	0	0	0	0	0	0	0	0	0	0	0	0	1	1	0	0	
Public Safety Academy	0	0	0	0	0	0	100	100	102	102	102	100	83	85	0	774	25	778	99.5%
Totals	456	1,384	1,484	1,490	1,541	1,583	1,634	1,688	1,685	1,709	1,696	1,694	1,764	1,884	396	22,088	960	26,959	81.9%